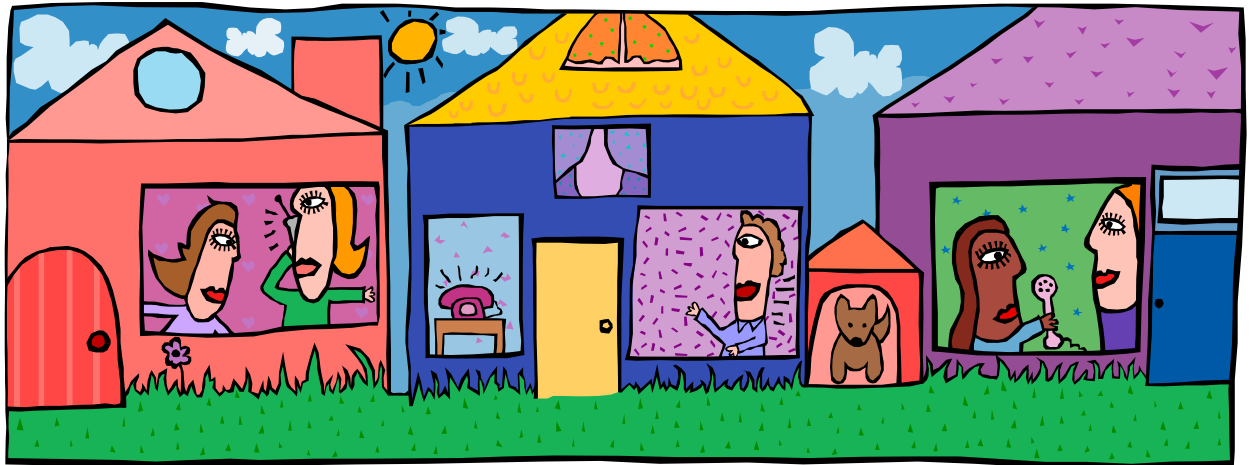


# **United Way's Community Council**



**2009 Annual Report  
to the community of  
Alamance County**

# Letter from the 2009 Community Council President

It has been an honor to serve as President of Community Council this past year. To be a part of such inspiring, passionate, and dedicated community leaders has certainly filled me with a new level of excitement.

At a time when many in our community are struggling, our Community Council 's Divisions were hard at work formulating new ideas and strategies to meet basic needs, improve the lives of families, the youth and the elderly. Our Program Committee did an outstanding job in bringing speakers to our meetings that educated, challenged and encouraged us to be an active part of solutions for Alamance County.

I had the pleasure to serve as a United Way Board Member and this experience has truly been eye-opening. There is so much work that goes into assessing the needs of our great community and formulating funding plans to meet those identified needs. The work is often enormous, yet it leaves you with a sense of accomplishment and a strong belief in a better tomorrow. Alamance County must have the best United Way around!

Our monthly meetings are a time to share and receive information regarding community events and services. They are also a time to fellowship and socialize; to come together and catch up; to make new friends and to cooperate. While I have learned much from my duties as president, I am looking forward to once again, sitting out and congregating with the group!

There is also much preparation that goes into our meetings that is behind the scenes. I would like to thank Ruth Pruitt for her tireless efforts to keep us all on schedule and prepared. Thanks also should go to all of the United Way staff and to Cindy Brady, the great encourager.

I thank you for your support as it has been a privilege to serve as your Community Council President. I look forward to serving side by side with you all, making our community a healthier, happier place to live, work, prosper, raise our families, and to flourish and reach our dreams. Oh yeah, Toot Toot...don't forget to take public transportation whenever you can ☺

Suzan Evans, CrossRoads: Sexual Assault Response & Resource Center  
2009 Community Council President

# Community Council Highlights

## Membership & Purpose

Community Council/United Way is made up of Alamance County volunteers and professionals in social services, recreation, education, health agencies, government, business, representatives of civic and church organizations and selected members-at-large to:

- ...Promote cooperation and community planning
- ...Serve as information center for the community
- ...Stimulate continuous and systematic study of community needs and resources
- ...Formulate principles, methods and standards for improvements
- ...Stimulate and/or initiate needed new services
- ...Develop public awareness of community problems and possible solutions

The Community Council began in 1939 as an agency to coordinate all community services such as welfare, health, education and civic clubs. The Community Council, then known as the Council of Social Agencies, first met at the old Presbyterian Hut beside West Davis Street. Today a typical meeting of the Community Council involves lay and professional people who discuss Alamance County problems which deal with many of the same areas covered in their first meetings in 1939. However, today the Community Council not only coordinates the county's numerous social services, but also conceives, plans and begins new agencies and task forces to meet community needs.

## Major Community Council Accomplishments: 1939-2009

- Organized the Arts Association and first Arts Festival in Alamance County
- Organized the first Senior Citizens Club
- Honors Senior Citizens Club each year and recognizes Senior Citizen of the Year
- Provides information and referral
- Developed Latch-Key Task Force to encourage and support the growth of after-school programs
- Established the AIDS Task Force
- Helped establish the Drug Abuse Task Force
- Develops Community Wide Resource Directory every 2 years
- Co-Sponsored Annual Community-Wide Health Fair
- Established Hispanic Task Force – This helped develop Centro la Comunidad
- Provides fiscal management and reporting requirements for Emergency Food & Shelter Program Funds
- Provides fiscal management and reporting requirements for Duke Power's Share the Warmth fund
- Supports United Way Campaign - in the 61 year history of Community Council, many of the key volunteers for the campaign have been recruited from Community Council membership.
- Selects outstanding volunteers for county-wide and Governor's Volunteer Recognition honors
- Completed and published a Community Needs Assessment and Asset Study
- Prioritized Human Service Needs in conjunction with the United Way
- Reorganized divisions to align with the United Way's four Community Impact Areas
- Completed a county-wide Community Assessment in conjunction with Healthy Alamance
- Created a Public Transportation Task Force to harness and build public support for fixed-route public transit and to provide opportunities for business leaders, civic leaders, and local officials to learn more about how other communities have addressed their transportation needs.
- Created a Basic Needs brochure, promoted Family Day and began a Special Needs Registry

# Community Council

## Executive Committee

**President:** Suzan Evans, Crossroads  
**1<sup>st</sup> Vice-President:** Nikki Triplett, Burlington Housing Authority  
**2<sup>nd</sup> Vice-President:** Brenda Poteat, Allied Churches Drop-in Center  
**Immediate Past President:** Becky Mock, Women's Resource Center  
**Board Chair, United Way:** Derek Steed, Wishart, Norris, Henninger & Pittman

## Division Chairs

**Basic Needs** Brenda Allen, Loaves & Fishes  
Robin Wintringham, Habitat for Humanity  
**Elderly Needs** Susan York, Department of Social Services  
Anna Green, Alamance Plaza  
**Family Needs** Alexa Jordan, Ala. Co. Dispute Settlement & Youth Services  
Tony Roper, Ala. Co. Community Services Agency  
**Youth Needs** Beth Davis, Alamance County 4-H  
Allison Gant, Alamance Citizens for Education

## Standing Committees

**MEMBERSHIP/PUBLIC RELATIONS** April Durr, Healthy Alamance  
**HOSPITALITY CHAIR** Brenda Pagliari, AlaMAP of ARMC

March AlaMAP of ARMC  
April Crossroads  
May Alamance County 4-H  
June Homeplace of Burlington  
September Habitat for Humanity  
October Alamance Partnership for Children  
November Family Abuse Services  
December Healthy Alamance  
January American Eldercare  
February Teen-to-Teen Theatre

**PROGRAM CHAIR** Heidi Norwick, Women's Resource Center

**NOMINATING COMMITTEE** Brenda Allen, Loaves & Fishes  
Beth Davis, Alamance County 4-H  
Anna Green, Alamance Plaza

# 2009-2010 Program Calendar for Community Council

**Program Chair: Heidi Norwick**

- March      5 Minute: Haw River Trail – Brian Baker  
KeyNote: UNC Center for Poverty, Work and Opportunity – Professor Gene Nichol
- April        5 Minute: Crossroads – Suzan Evans  
KeyNote: Volunteer Awards
- May         5 Minute: Sr. Citizen Club Presidents / Sr. Citizen of the Year  
5 Minute: Elon Academy – Darris Means  
KeyNote: United Way's Need Assessment/Priority Selection – Cindy Brady
- June        5 Minute: Consumer Credit Counseling Services – Pete Sargent  
3 Minute: Department of Social Services Survey – Lori Lafferty  
KeyNote: ACC's 50<sup>th</sup> Anniversary – Dr. Martin Nadelman
- September 5 Minute: United Way Priorities – Cindy Brady  
KeyNote: Literacy - Barriers and Resources - What Service Providers Need to Know – Kathy Goodlett & Glenda Morrow
- October    2 Minute: United Way Car Drawing – Jordan Morris  
5 Minute: Project Safe Neighborhoods – Jackie Sheffield & Dianne Shipmon  
KeyNote: H1N1 Preparedness – Kathy Colville
- November 5 0Minute: Homelessness Prevention and Rapid Re-housing Program Grant  
– Cindy Brady, Nikki Ratliff, Tony Roper  
KeyNote: Transportation Implementation Plan for Alamance County – Kurt Neufang, Senior Transportation Planner for URS Corp.
- December  Entertainment: Patty Philipps
- January    5 Minute: Homelessness Prevention and Rapid Re-housing Program Grant  
– Nikki Ratliff  
KeyNote: Alamance Community College Meeting Space – Ed Williams
- February  5 Minute: Installation of Officers  
5 Minute: Elon University Biobus Update – Tammy Cobb  
KeyNote: Sarah B Weissberg, Membership Director, Editor, *Common Ground*, N.C. Center for Nonprofits

## **2009 Alamance County's Awards for Outstanding Volunteer Service**

### **Alamance County Youth Advisory Council**

### **Education Award**

The Alamance County Youth Advisory Council (ACYAC) was formed in July of 2007 and is comprised of high school members representing the local high schools in the Alamance-Burlington School System. This group recognized the alarming trends of underage drinking and the negative consequences this behavior brings and wanted to make a difference bringing about change to this risky and illegal practice. The Council has advocated to state representatives, held a Town Hall Meeting with over 75 people in attendance, worked with other students and participated in several informational events. In less than two years, through advocacy, skill building techniques, peer education and media campaigns this group of high school students is effectively addressing one of the largest public health crises of their times.

### **Norman & Gloria Melton**

### **Health Award**

Norman & Gloria Melton have volunteered with the National Alliance on Mental Illness (NAMI) for the past 11 years. They have given their time and energy to support, educate and advocate for citizens with serious and persistent mental illness. They are tireless advocates, manning the phone line 24/7, increasing NAMI's membership, representing NAMI on numerous committees, and providing new programs to Alamance County. The Meltons have inspired other family and friends of the mentally ill to also become supporters, educators and advocates. They have worked diligently to defeat the stigma associated with mental illness. The Melton's dedication to this cause is immeasurable.

### **Cornellia Talley**

### **Special Events Award**

For over fifteen years, Cornelia Talley has been an active and important volunteer at the American Red Cross. She is the chair of the Blood Services committee and recruits, trains, and schedules the local volunteers who do the blood drives. Talley has given over 2,000 hours of her time to Blood Services. In addition, she helps plan and organize fundraisers and she and her husband do the housekeeping and maintenance for the Red Cross office. Without Talley, there would be fewer volunteers to partner with the Red Cross as they pursue our mission of helping the citizens of Alamance County and fewer people donating blood to local hospitals and their patients. Talley also volunteers with Allied Churches Good Shepherd Kitchen, the March of Dimes, Alamance Business Women's Association, and Toastmasters. Every day Talley's efforts make quiet, but significant impacts on the citizens of this community.

### **Phil Bowers**

### **Social Services Award**

Phil volunteers with Crossroads and is a true example of a life led by volunteerism. Phil is passionate about the staff, the maintenance and growth of the organization, and most importantly of the victims served by Crossroads. Phil is committed to making Alamance County a better place to live for ALL of its residents regardless of their age, race, gender, or past. He has helped develop Crossroads first strategic plan and is working to help them develop a financial sustainability plan. He is willing to speak up for victims of sexual violence and to make the community aware of the issues faced by these victims. In addition to volunteering at Crossroads, Phil provides guidance and support to individuals convicted of a crime in a program called Step Up, he is active with Sustainable Alamance and volunteers at E.M. Holt Elementary School. His compassion and dedication to others is a gift that is awe inspiring.

### **Bob Brooks**

### **Social Services Award**

Bob has volunteered for Allied Churches and the Good Shepherd Kitchen for the past ten years. Bob's service to this ministry is extremely outstanding. He not only works with the Kitchen Committee, but also helps with management, finances, and any other tasks that need completing. Bob has worked countless hours with the Inventory Management, helping clients, supporting other volunteers, assisting staff, and preparing and serving food to the guests in the soup kitchen program. He has introduced others to the cause and put them to work volunteering as well. Bob also volunteers with Special Olympics and with the hospital. As a great role model for positive community volunteerism, Bob is always professional, motivating, and humble.